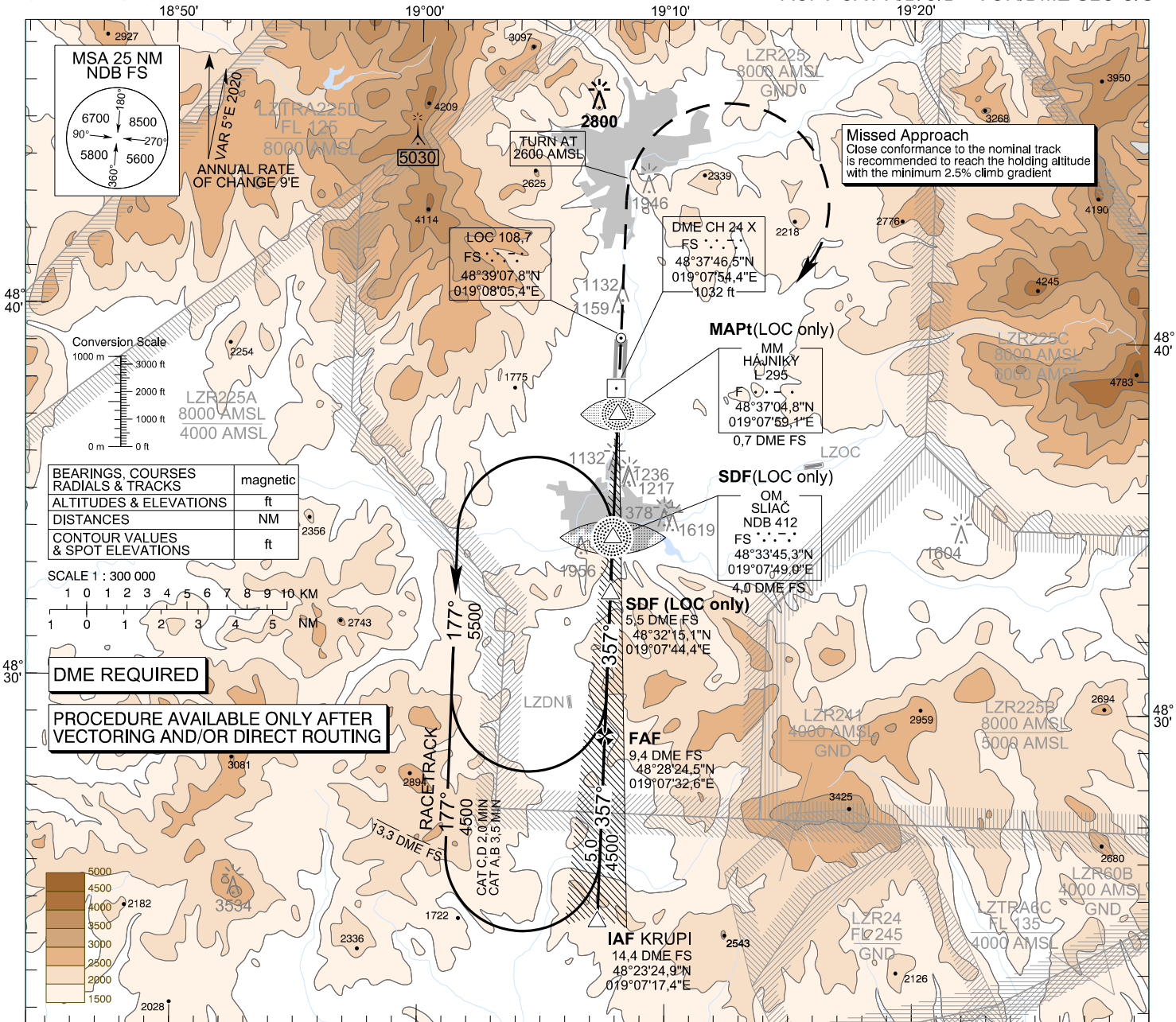


**INSTRUMENT
APPROACH
CHART - ICAO**

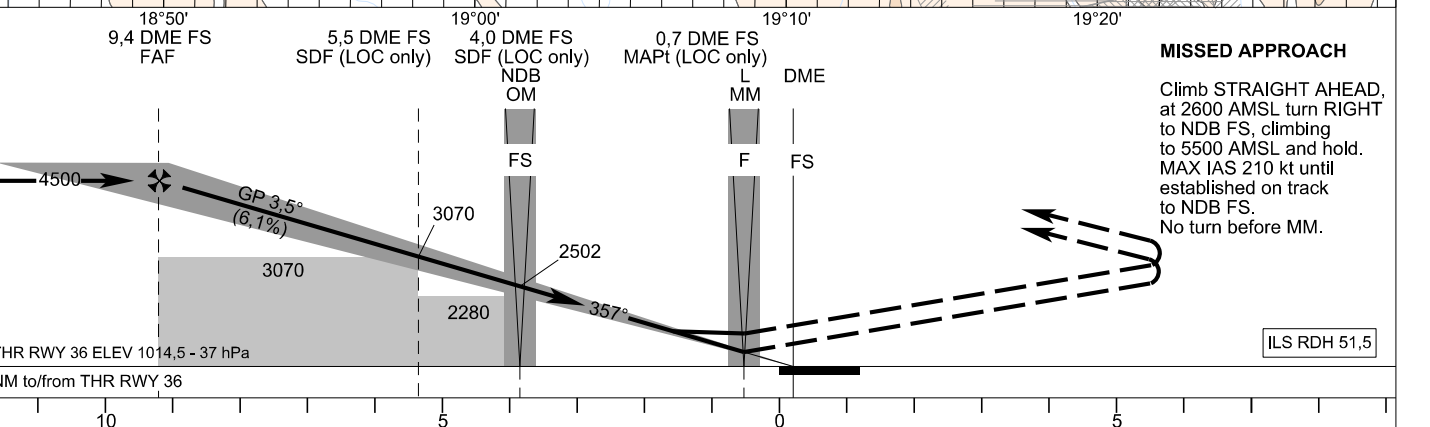
TRANSITION ALTITUDE 10 000 ft
AD ELEV 1044,0 - 38 hPa
THR RWY 36 ELEV 1014,5 - 37 hPa

SLIAČ RADAR 119,155
SLIAČ TOWER 122,905

SLIAČ (LZSL)
ILS CAT I or LOC RWY 36
ACFT CAT A/B/C/D - VOR/DME SLC U/S



DME REQUIRED
**PROCEDURE AVAILABLE ONLY AFTER
VECTORIZING AND/OR DIRECT ROUTING**



MISSED APPROACH
Climb STRAIGHT AHEAD, at 2600 AMSL turn RIGHT to NDB FS, climbing to 5500 AMSL and hold. MAX IAS 210 kt until established on track to NDB FS. No turn before MM.

Straight-In Approach	OCA (OCH)	ASC	A				B				C				D						
			2,5%	5,0%	2,5%	5,0%	2,5%	5,0%	2,5%	5,0%	2,5%	5,0%	2,5%	5,0%	2,5%	5,0%					
CAT I	2,5%	ft	1763 (749)	1777 (763)	1787 (773)	1800 (786)	3070 (2056)	1940 (926)	3070 (2056)	1520 (506)	2410 (1366)	2810 (1766)	2840 (1796)	4361	3989	3617	3246	2874	2502	2131	1759
LOC	2,5%	ft																			
	5,0%	ft																			
	5,0%	ft																			
Circling (* see Note)		ft	2410 (1366)	2810 (1766)	2840 (1796)																