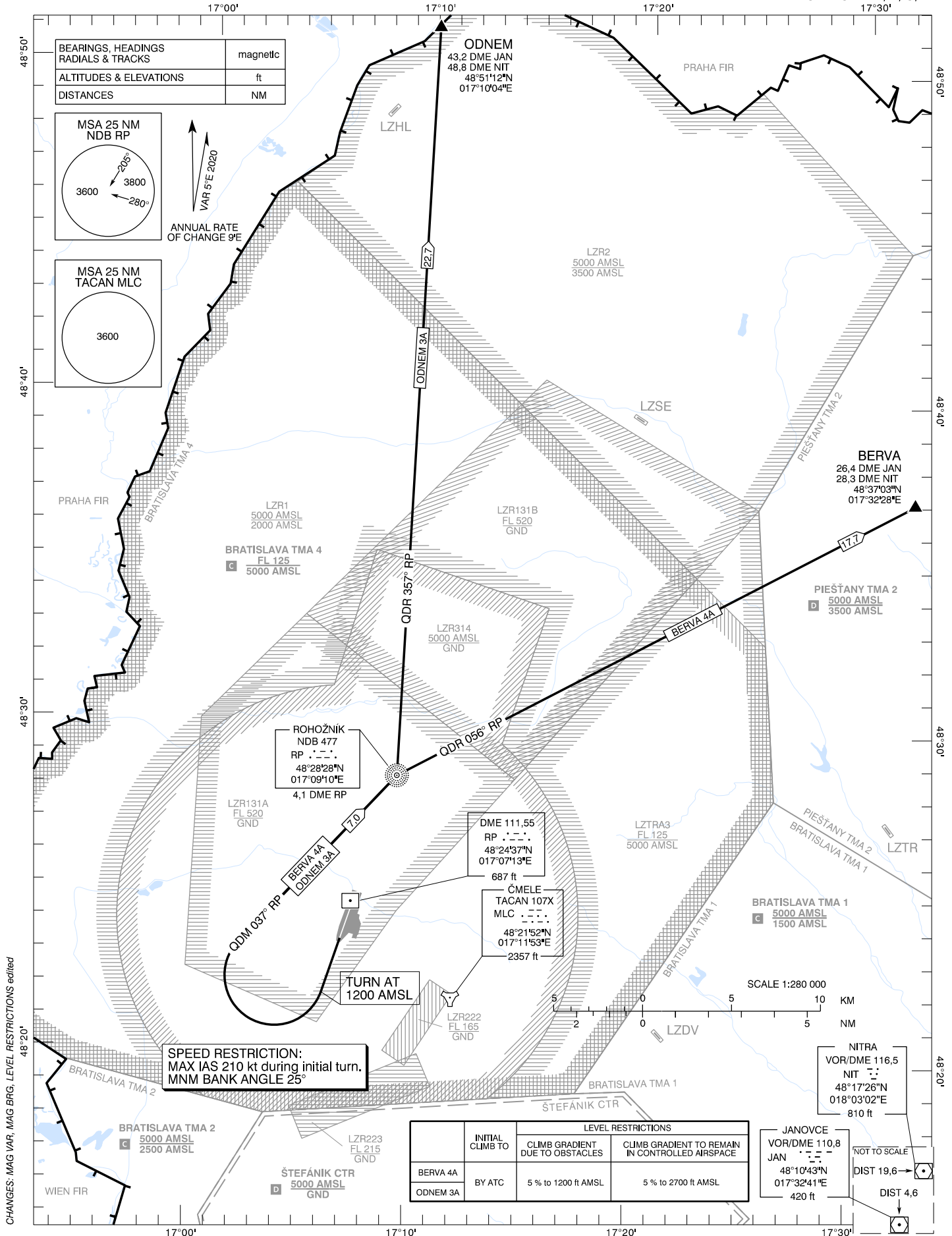


STANDARD DEPARTURE CHART -
INSTRUMENT (SID) - ICAO

TRANSITION ALTITUDE
10 000 ft

MALACKY RADAR 120,750 (259,625)
MALACKY TOWER 129,575 (120,750)

MALACKY (LZMC)
SID RWY 19
ACFT CAT A/B/C/D



CHANGES: MAG VAR, MAG BRG, LEVEL RESTRICTIONS edited